

The unique
Rotary Lobe Pump
with MIP!



Gentle Solutions: Wine Industry Pumping Applications Technology from Börger.

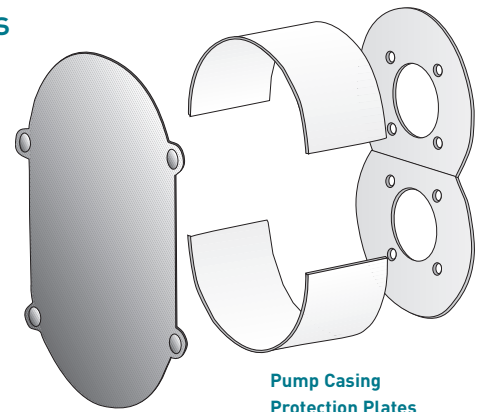
The wine industry depends heavily on robust and durable pumping systems with gentle and minimal pulsation conveying characteristics. The low shear operation of Börger Rotary Lobe Pump combined with the wide range of pump sizes, the option loaded modular design and the peripheral equipment enable Börger to supply a suitable Rotary Lobe Pump for your wine process pump applications.

Next to stationary pump units Börger offers individually designed mobile pumps for flexible situations.

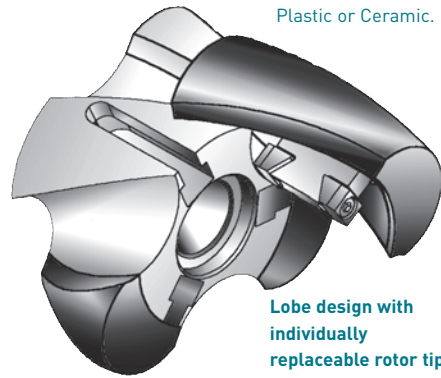
The Börger MIP-Design is a unique advantage to minimize downtime and maintenance: MIP (Maintenance In Place) allows the quick and convenient replacement of all fluid wetted parts without removal of pipes, drives or other components of the pump unit by your own staff. Quick – Uncomplicated – Inexpensive.

Since most process pumps in the Wine Industry are equipped with Stainless Steel components, the MIP feature with all around protection plates eliminates the stainless steel pump casing as a wear part.

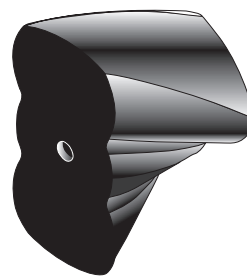
Entirely coated rotors including the adjustable rotor, the new Optimum lobe and screw rotors for almost pulsation-free operation are reliable features of Börger Rotary Lobe Pumps.



**Pump Casing
Protection Plates**
Optional materials from
Hardox, Stainless Steel,
Plastic or Ceramic.

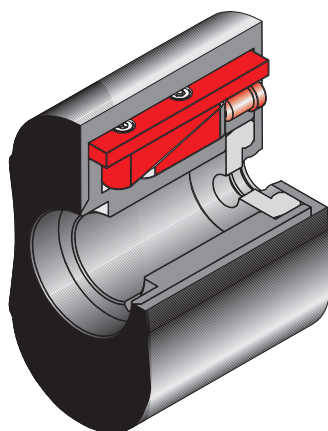
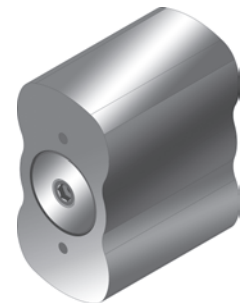


**Lobe design with
individually
replaceable rotor tip**
Uncomplicated
maintenance and inexpensive
repair with rotor tips.



The Optimum Lobe

- Longer Sealing Lines
- Improved Suction Capabilities
- Increased Pressure Capabilities
- Pressure Stability
- Solids Handling
- Reduced Life Cycle Costs
- Optimal Efficiency

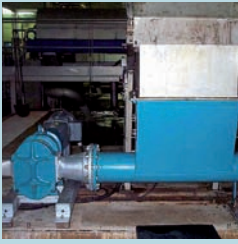


Readjustable Rotors

Readjusting saves costs and time: This patented rotor design is readjustable, which can easily compensate for wear and tear.

Worldwide unique
and exclusive from
Börger: Unrivaled MIP-
Design reduces life cycle
cost and downtime.





Must Pump | A winery was experiencing dry run problem with a progressive cavity pump operating in a must application. Since in the front end of the wineries often large pumping units including auger feed systems are used, reliability and fast maintainability with minimal life cycle cost is key. With the Börger MIP Design all fluid wetted parts can be cost effectively and quickly exchanged onsite by your own staff.

TECHNICAL SPECIFICATION

Pump	PL 300	PL 300
Flow Rate	30-60 m ³ /h	132-264 usgpm
Pressure	2 bar	30 psi
Power	7.5 kW	10 HP



Press Sump Juice | For juice transfer applications, the compact design of the Rotary Lobe Pump helps keep space requirements to a minimum for the often large transfer flows from the press to the tanks. Also important is gentle handling, one of the main characteristics of the Börger Rotary Lobe Pump.

TECHNICAL SPECIFICATION

Pump	PL 200	PL 200
Flow Rate	15-35 m ³ /h	66-1100 usgpm
Pressure	1.5 bar	22 psi
Power	5.5 kW	7.5 HP



Pump Over Application | Rotary lobe pumps have been preferred for pump overs due to their high throughput and for their gentle handling of the must. In this case the Börger Rotary Lobe Pump has been chosen because of its wide flow range. The Börger model FL 518 displaces 150 gal / 100 rev, therefore it can cover a flow range between 100 gpm and 750 gpm. Flow is proportional to speed and therefore very effectively controllable.

TECHNICAL SPECIFICATION

Pump	FL 518	FL 518
Flow Rate	22-170 m ³ /h	100-750 usgpm
Pressure	1 bar	15 psi
Power	18.5 kW	25 HP



Pomace application | Big six-inch rotary lobe pumps that are outfitted with elastomer coated rotors are used to pump pomace in several larger facilities. The rubber lobes allow the pump to self-prime, and the bigger bore can pass the pomace better than a smaller pump. The wine maker noted that they use a huge Börger six-inch lobe pump for pumping out their red fermentors. "Our tank bottom doors are at ground level; we wanted to convert from using screw conveyors due to the shearing we were getting in the transitions of the screw conveyors. We decided to go with a lobe pump to get the pomace to the presses, which has worked well from both a quality and an efficiency standpoint."

TECHNICAL SPECIFICATION

Pump	FL 518	FL 518
Flow Rate	25-100 m ³ /h	110-440 usgpm
Pressure	3 bar	45 psi
Power	15 kW	20 HP



Filtration Pump | Every Winery needs a filtration pump. The Börger Rotary Lobe Pump is a versatile choice. Various flows and pressures can be achieved, giving the highest level of flexibility. The Optimum Rotor is an excellent selection for the filtration applications due to its high pressure stability.

TECHNICAL SPECIFICATION

Pump	PL 100	PL 100
Flow Rate	5-10 m ³ /h	22-44 usgpm
Pressure	3 bar	45 psi
Power	4 kW	5 HP

BÖRGER®

Boerger, LLC

740 NE Harding Street
Minneapolis, MN 55413
USA

Toll Free 877-726-3743

Phone 612-435-7300

Fax 612-435-7301

america@boerger.com

www.boerger.com

